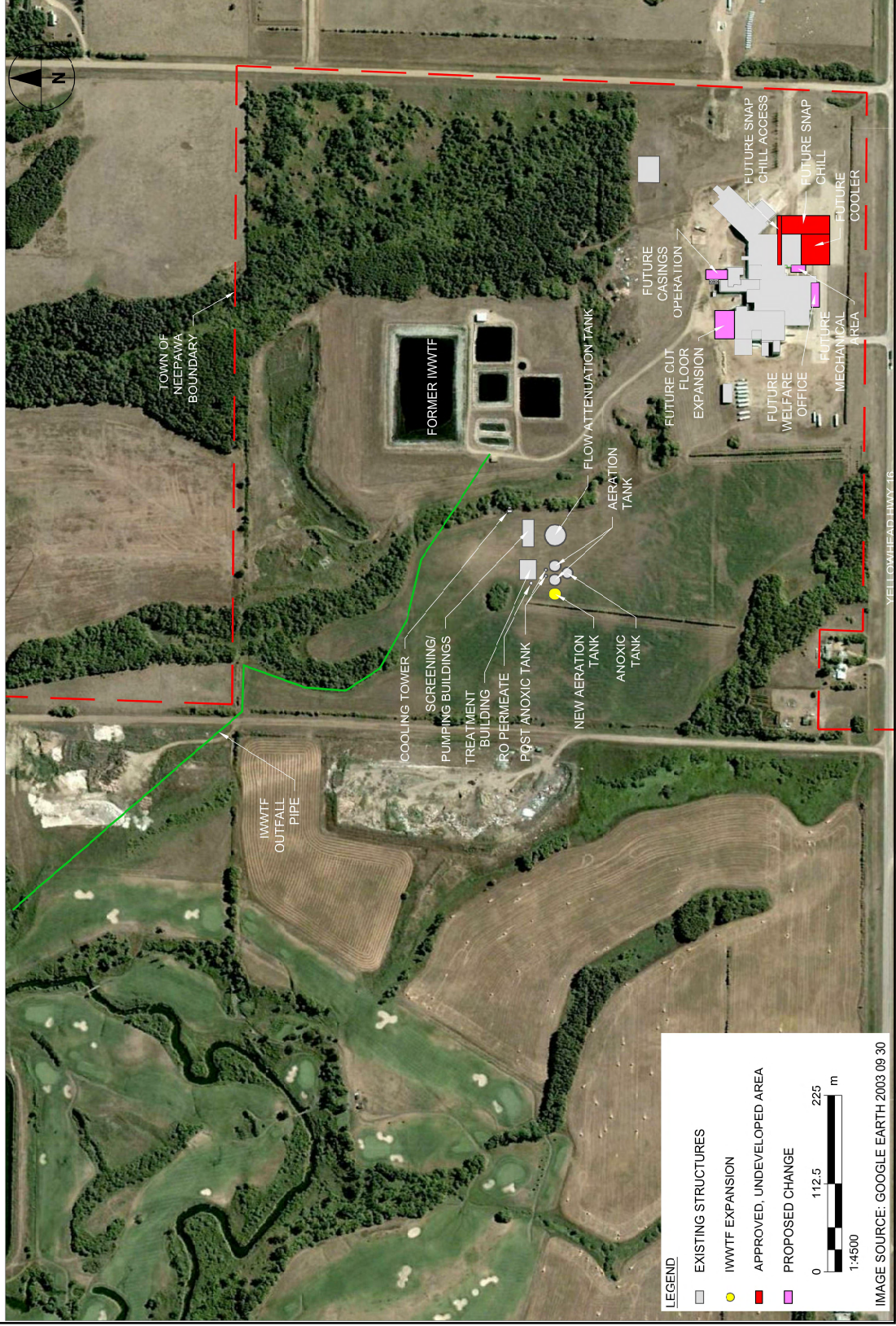


Plan View of HyLife Foods and IWWTF Expansion



Environmental Assessment – How does it work?

- Describe the project
- Identify inputs/outputs of the project
- Describe the existing environment
- Evaluate the interactions between the project and the existing environment
- Develop management and mitigation measures to reduce or eliminate potential environmental effects
- Determine residual effects remaining after mitigation

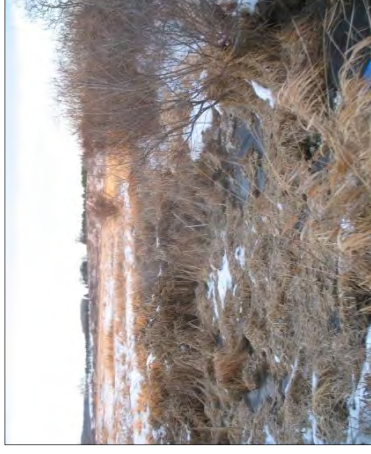
January 16, 2013



Environmental Assessment – What did we look at?

Physical Environment

- Soil
- Groundwater
- Surface Water
- Air



Biological Environment

- Vegetation and Wildlife
- Aquatic Resources



Cultural Environment

- Archaeological and Heritage Features

January 16, 2013



Preliminary Findings of the Environmental Assessment

Surface Water and Aquatic Resources

- The proposed alterations will allow expansion at HyLife Foods while still meeting treatment requirements of the R3 Innovations IWWTF Environment Act Licence
- Environment Act Licence 2870 issued for the R3 Innovations IWWTF includes limits for flow and quality to ensure protection of surface water and aquatic resources
 - 15 mg/L Total Nitrogen
 - 1 mg/L Total Phosphorus
 - Carbonaceous BOD < 25 mg/L
 - Total Suspended Solids < 25 mg/L
 - Fecal Coliform < 200 MPN/ 100 mL
 - E. Coli < 200 MPN/ 100 mL
 - Effluent cannot be acutely lethal to fish
- The R3 Innovations IWWTF is designed and licenced to treat up to 1,520 m³/day
- The proposed alterations would produce approximately 1,100 to 1,200 m³/day

- **No surface water or aquatic resources concerns**

January 16, 2013

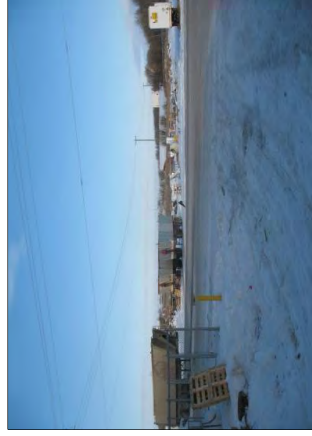


AECOM

Preliminary Findings of the Environmental Assessment

Soils, Vegetation and Wildlife

- Soils in the project area consist of fine to medium grained brown sand and silty grey sands
- Vegetation in the project area has been previously altered to agricultural crop land
- Vegetation in the project area consists mainly of hay meadow composed primarily of Alfalfa and species of Blue Grass with willows in the area
- Proposed upgrades to occur in and around previously disturbed areas on an active industrial site
- There is no native vegetation in the project site
- **No soils, vegetation or wildlife concerns**



Future casings expansion area



Future cut floor expansion area



Future cooler/snap chill area

January 16, 2013

